

ELECTRICAL SYMBOLS

- REFERENCE TO DETAIL AND SHEET NUMBER
- FLUSH MOUNTED PANEL
- SURFACE MOUNTED PANEL
- EQUIPMENT SUPPLIED BY DIVISION 16
- EQUIPMENT SUPPLIED BY OTHER DIVISIONS
- FLUORESCENT LIGHT FIXTURE
- EMERGENCY FLUORESCENT LIGHT FIXTURE
- CEILING/CANOPY MOUNTED LIGHT FIXTURE
- WALL MOUNTED LIGHT FIXTURE
- CEILING MOUNTED EXIT LIGHT FIXTURE
- WALL MOUNTED EXIT LIGHT FIXTURE
- NEUTRAL CONDUCTOR
- PHASE CONDUCTOR
- GROUND CONDUCTOR

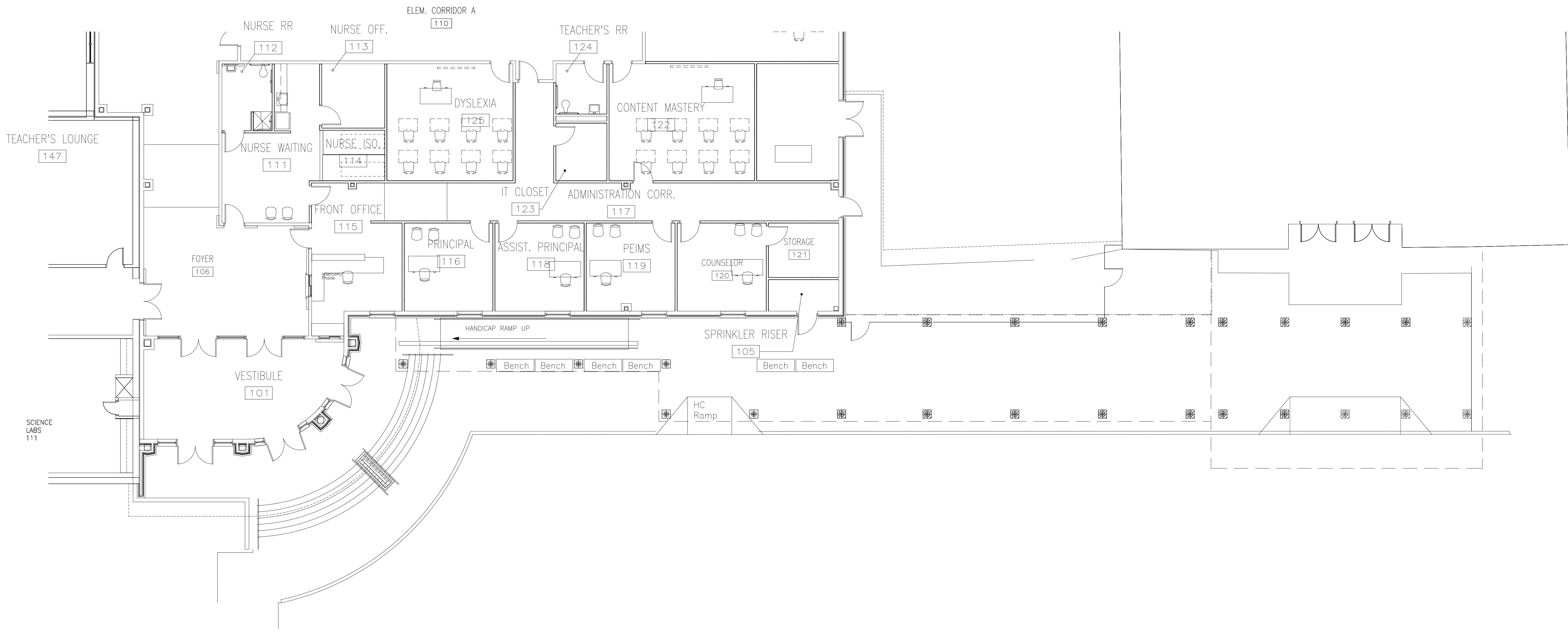
- GFCI GROUND FAULT CIRCUIT INTERRUPTER DUPLEX RECEPTACLE
- C CEILING MOUNTED DUPLEX RECEPTACLE
- F FLOOR MOUNTED DUPLEX RECEPTACLE
- DD DOUBLE DUPLEX RECEPTACLE
- IG ISOLATED GROUND DOUBLE DUPLEX RECEPTACLE
- IG FLOOR MOUNTED ISOLATED GROUND DOUBLE DUPLEX RECEPTACLE
- PD PEDESTAL MOUNTED DUPLEX RECEPTACLE
- SP SPECIAL PURPOSE CONNECTION/OUTLET
- SP SINGLE SPECIAL PURPOSE RECEPTACLE, 18" AFF
- J JUNCTION BOX
- FB FLOOR JUNCTION BOX
- J00 JUNCTION BOX WITH MOUNTING HEIGHT
- C00 CEILING MOUNTED CAMERAS
- W00 WALL MOUNTED CAMERAS

- SWITCH LEG AND/OR BRANCH CIRCUIT
- BRANCH CIRCUIT
- HOME RUN TO PANELBOARD
- UOF UNDERGROUND OPTIC FIBER
- UEF UNDERGROUND ELECTRICAL FEEDER
- EC EMPTY CONDUIT
- UEP UNDERGROUND ELECTRICAL PRIMARY
- OEP OVERHEAD ELECTRICAL PRIMARY
- FC FUTURE CONDUIT
- \$ SWITCH, 48" AFF
- \$3 THREE-WAY SWITCH, 48" AFF
- D\$3 THREE-WAY DIMMER SWITCH, 48" AFF
- D\$OS OCCUPANCY SENSOR DIMMER SWITCH, 48" AFF
- \$OS OCCUPANCY SENSOR SWITCH WITH OVER RIDE 48" AFF, DUAL TECH
- OS\$3 3-WAY OCCUPANCY SENSOR SWITCH WITH OVER RIDE 48" AFF, DUAL TECH
- \$OS GREENMAX DIGITAL SWITCH, 48" AFF

- TELEPHONE ADMINISTRATIVE HANDSET
- DATA OUTLET, 18" AFF
- 2 DATA OUTLET WITH NUMBER OF CABLE DROPS, 18" AFF
- 00" DATA OUTLET WITH MOUNTING HEIGHT COMBINATION OF DATA AND VIDEO OUTLETS, 18" AFF
- 3 DATA/VOICE OUTLET WITH NUMBER OF CABLE DROPS, 18" AFF
- 00" DATA/VOICE OUTLET WITH MOUNTING HEIGHT
- (WA) WIRELESS ACCESS POINTS
- (CB) INTERCOM CALL BUTTON/PHONE, 48" AFF
- (ML) MAG LOCKS
- (PB) PUSH BUTTON DOOR RELEASE
- (GB) GLASS BREAK DETECTION
- (MD) MOTION DETECTOR
- (CR) CARD READER
- (SC) PROJECTOR SOUND CONTROL, 48" AFF
- (S) CEILING MOUNTED SPEAKER

- \$P SWITCH WITH PILOT LIGHT, 48" AFF
- \$4 FOUR-WAY SWITCH, 48" AFF
- \$D DIMMER SWITCH, 48" AFF
- \$K KEY SWITCH, 48" AFF
- \$3K THREE-WAY KEY SWITCH, 48" AFF
- \$M MOTOR RATED SWITCH
- (OS) CEILING MOUNTED OCCUPANCY SENSOR EQUAL TO LEVITON DUAL TECH
- (PL) LOW VOLTAGE PHOTOCELL GREENMAX PPS-5
- (M) MOTOR
- (DS) DISCONNECT SWITCH
- (R) DUPLEX RECEPTACLE, 18" AFF
- (R00) DUPLEX RECEPTACLE WITH MOUNTING HEIGHT
- (IG) ISOLATED GROUND DUPLEX RECEPTACLE
- (WP) WEATHER PROOF DUPLEX RECEPTACLE

- (S00) WALL MOUNTED SPEAKER WITH MOUNTING HEIGHT
- (S-100) WALL MOUNTED WEATHERPROOF SPEAKER, 168" AFF
- (F) FIRE ALARM PULL STATION, 48" AFF
- (FV) FIRE ALARM AUDIO/VISUAL DEVICE, 80" AFF
- (FV) FIRE ALARM VISUAL DEVICE, 80" AFF
- (V) CEILING MOUNTED FIRE ALARM VISUAL DEVICE
- (SD) CEILING MOUNTED SMOKE DETECTOR
- (SD) DUCT MOUNTED SMOKE DETECTOR
- (FH) FIRE ALARM EXTERIOR HORN, 108" AFF
- (R) FIRE ALARM SHUT DOWN RELAY
- (KB) FIRE ALARM KNOX BOX, 48" AFF
- (M) FLOOR MOUNTED MICROPHONE
- (PB) DOOR BELL PUSH BUTTON SWITCH, 48" AFF
- (BD) DOOR BELL CHIMES, 90" AFF



1 POWER & COMMUNICATION FLOOR PLAN
 SCALE: 1/8" = 1'-0"

THIS DOCUMENT HAS BEEN ISSUED FOR INTERIM REVIEW AND NOT INTENDED FOR BIDDING, ISSUE OF PERMITS, OR CONSTRUCTION PURPOSES. ISSUED: _____

OT JOB #1819

TOWEN TAYLOR ENGINEERING, INC.

105 S VILLAGE WOODVILLE, TEXAS 75979 TX ST. # F-4765 PHONE (409) 263-5517 FAX (409) 263-3514

DRAWING SHEET TITLE

POWER & COMMUNICATION FLOOR PLAN

SHEET NUMBER **E-1**

PROJECT NO. 1854

ELEMENTARY SCHOOL ADDITION

Autodesk

Manchester, NH

Brookeland, Texas

JAMES R. CLARK, AIA
 TEXAS REG.# 13662
 DATE: 10/2/2018
 THIS DOCUMENT MAY NOT BE USED FOR BIDDING, PERMITS, OR CONSTRUCTION PURPOSES.

RONALD W. JONES, AIA
 TEXAS REG.# 13662
 DATE: 10/2/2018
 THIS DOCUMENT MAY NOT BE USED FOR BIDDING, PERMITS, OR CONSTRUCTION PURPOSES.

